



**Teatown Lake
Reservation**

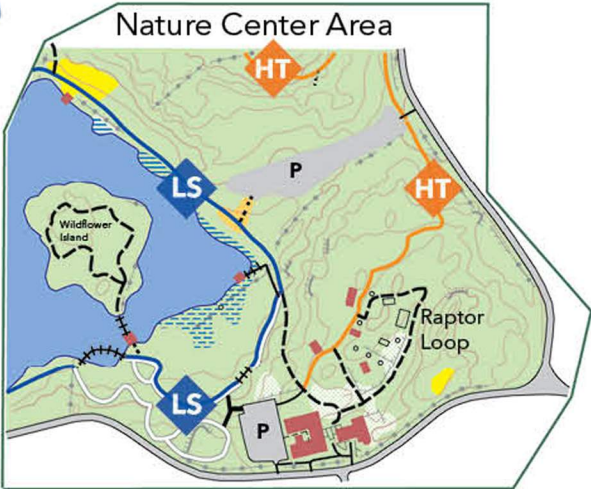
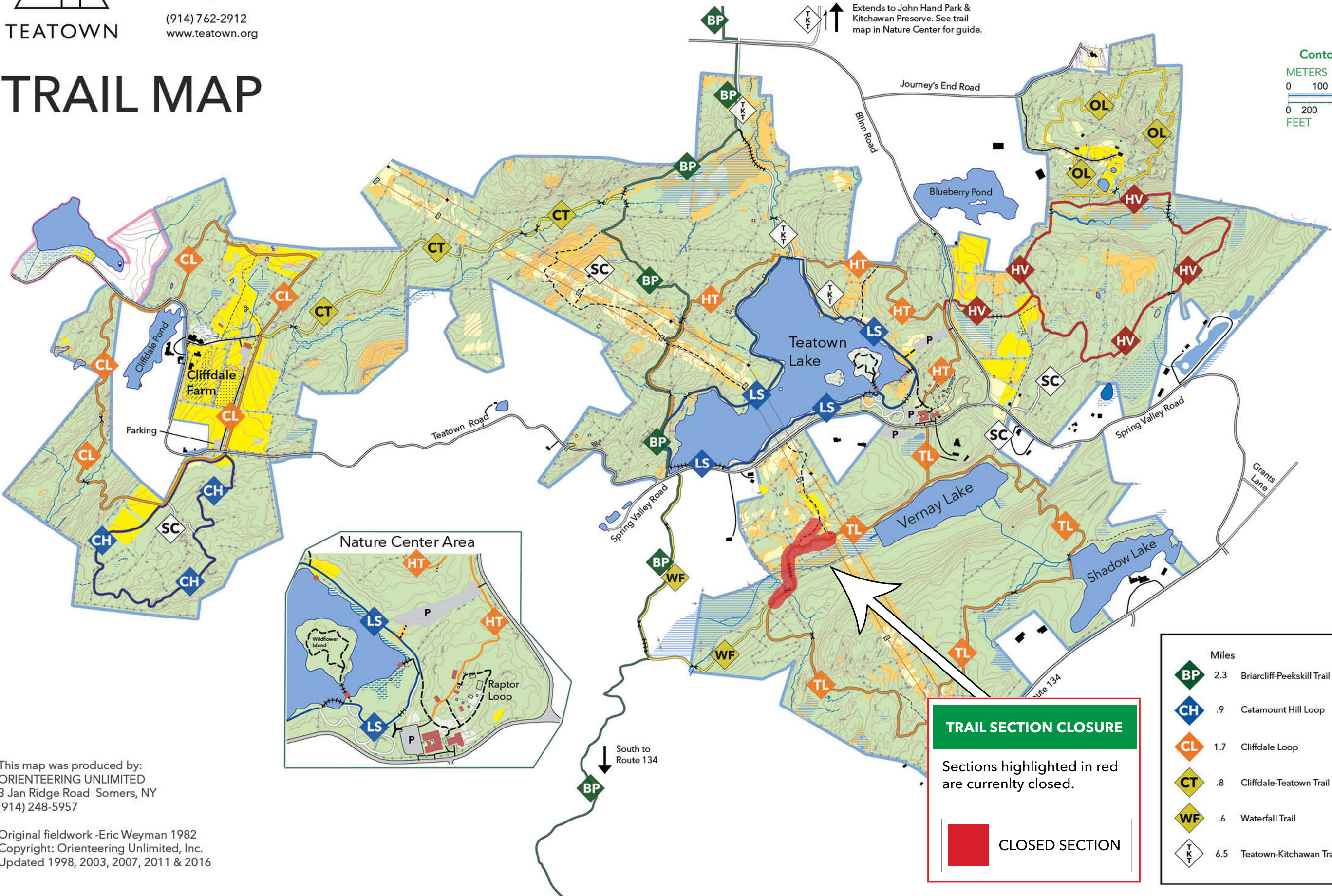
1600 Spring Valley Rd
Ossining, NY 10562

(914) 762-2912
www.teatown.org

TRAIL MAP



Contours: 3 meters (10 ft.)
METERS
0 100 200 250 300 400 500
FEET
0 200 600 1000 1400



LEGEND

- Paved Road
- Small Road
- Unpaved Access Road
- Electric Towers
- Stonewall
- Fence
- Buildings - Teatown
- Buildings - Private
- Property Boundary
- Ruin, Misc. Objects
- Major Cliffs
- Contour Lines
- Index Contours
- Parking
- Depression, knoll
- Lake, Pond, Streams
- Boardwalk, Bridge
- Ditch, Narrow Marsh
- Marsh, Wetland
- Shrubland
- Meadow
- Forest
- Orchard, Garden
- Parking Area

TRAIL KEY

Miles		Miles	
	2.3		1.2
	.9		1.5
	1.7		1.5
	.8		.9
	.6		2.3
	6.5		-
Briarcliff-Peekskill Trail		Hilltop Trail	
Catamount Hill Loop		Hidden Valley Loop	
Cliffdale Loop		Lakeside Loop	
Cliffdale-Teatown Trail		Overlook Loop	
Waterfall Trail		Twin Lakes Loop	
Teatown-Kitchawan Trail		Short Cut	

TRAIL SECTION CLOSURE

Sections highlighted in red are currently closed.



CLOSED SECTION

This map was produced by:
ORIENTEERING UNLIMITED
3 Jan Ridge Road Somers, NY
(914) 248-5957

Original fieldwork -Eric Weyman 1982
Copyright: Orienteering Unlimited, Inc.
Updated 1998, 2003, 2007, 2011 & 2016