

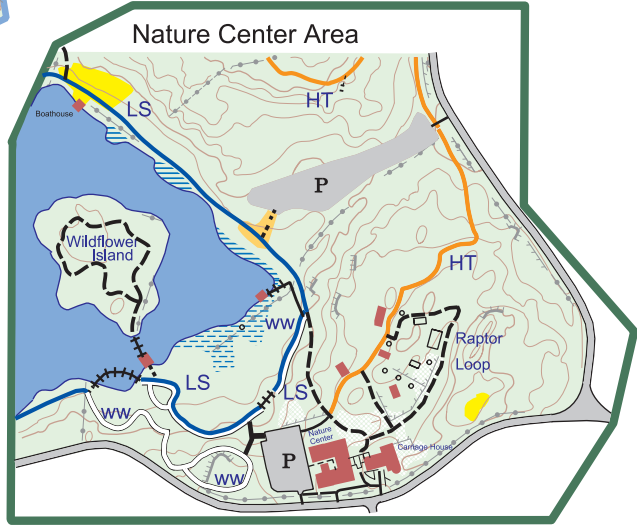
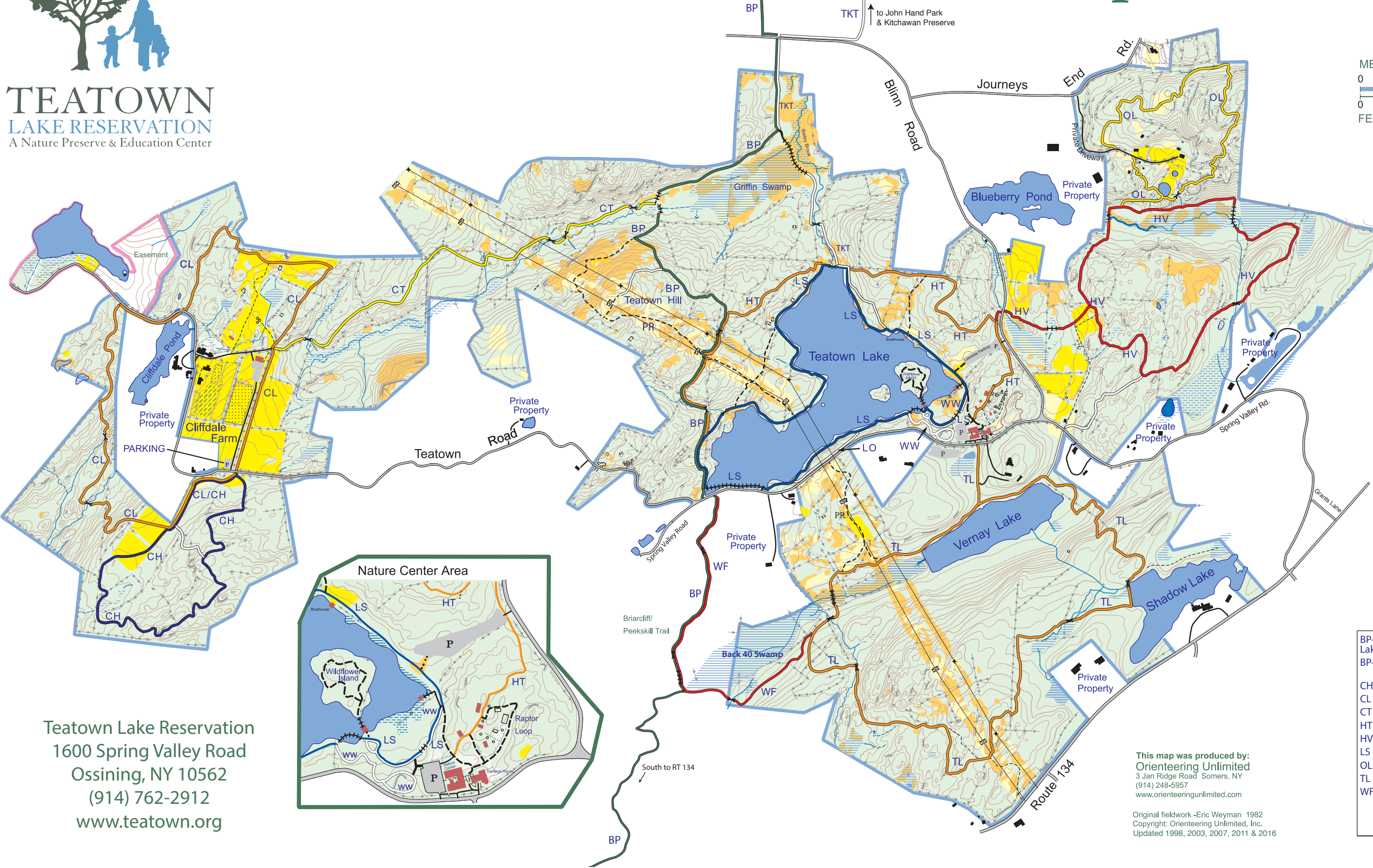


TEATOWN
LAKE RESERVATION
A Nature Preserve & Education Center

Teatown Lake Reservation Trail Map



Magnetic North
Contours: 3 meters (10 ft.)
METERS
0 100 200 250 300 400 500
FEET
0 200 600 1000 1400



LEGEND

- Paved Road
- Small Road
- Minor Trail
- Electric Towers
- Stonewall
- Fence
- Buildings - Teatown
- Buildings - Private
- Property Boundary
- Ruin, Misc. Objects
- Major Cliffs
- Contour Lines
- Index Contours
- Parking
- Depression, Knoll
- Lake, Pond, Streams
- Boardwalk, Bridge
- Ditch, Narrow Marsh
- Marsh, Wetland
- Shrubland
- Meadow
- Forest
- Orchard, Garden
- Parking Area

TRAIL KEY

Trail Name	Distance (miles)
BP-S Briarcliff-Peekskill Trail	1
Lakeside Loop to Blinn Road	1.3
BP-N Briarcliff-Peekskill Trail	1.3
Rte 134 to Lakeside Loop	1.3
CH Catamount Hill Loop	.9
CL Cliffdale Loop	1.7
CT Cliffdale-Teatown Trail	.8
HT Hilltop Trail	1.2
HV Hidden Valley Loop	1.5
LS Lakeside Loop	1.5
OL Overlook Loop	.9
TL Twin Lakes Loop	2.3
WF Waterfall Trail	.6
Powerline Road	
Shortcut Trails	

Teatown Lake Reservation
1600 Spring Valley Road
Ossining, NY 10562
(914) 762-2912
www.teatown.org

This map was produced by:
Orienteering Unlimited
3 Jan Ridge Road Somers, NY
(914) 248-5957
www.orienteeringunlimited.com
Original fieldwork -Eric Weyman 1982
Copyright: Orienteering Unlimited, Inc.
Updated 1998, 2003, 2007, 2011 & 2016